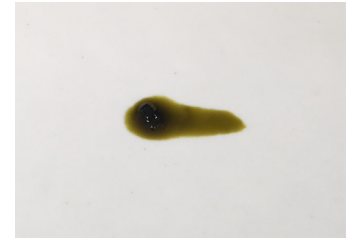


CERTIFICATE OF ANALYSIS No.: 2021-2900

CLIENT

Hempika d.o.o., Cankarjeva ulica 84
5000 Nova Gorica, Slovenija



SAMPLE

CBD Paste 20%

Sample condition: SUITABLE

Sample ID: 2112

Sample type: Resinous material

Batch No.: PA20020365A

Work order: 2021-104561

Analysis ID: 2021_001

Method ID: PHL_RPC_12C

Method SOP: MET-002

Sample received: 04/01/2021

Start of analysis: 04/01/2021

End of analysis: 05/01/2021

Analyst: Janez Gerdenc

CANNABINOID PROFILE	Concentration [% w/w]	Expanded uncertainty [% w/w]	Graphic presentation of relative cannabinoid concentration
CBDV - Cannabidivarin	3.32	0.17	
CBDA - Cannabidiolic acid	2.54	0.13	
CBGA - Cannabigerolic acid	0.057	0.017	
CBG - Cannabigerol	0.293	0.073	
CBD - Cannabidiol	17.77	0.89	
THCV - Tetrahydrocannabivarin	0.417	0.067	
CBN - Cannabinol	< LOQ	n/a	
CBC - Cannabichromene	0.053	0.012	
THC - Δ-9-Tetrahydrocannabinol	0.097	0.021	
THCA - Δ-9-Tetrahydrocannabinolic acid	0.047	0.010	
8-THC - Δ-8-Tetrahydrocannabinol *	< LOQ	n/a	
CBL - Cannabicyclol *	< LOQ	n/a	

The results marked by * relate to non-accredited activity.

Units and abbreviations: % w/w = weight percent, < LOQ = below the limit of quantitation (0.03 % w/w), ND = not detected, n/a = not available.

The results given herein apply only to the sample as received. Expanded Uncertainty was calculated using coverage factor $k = 2$, corresponding to a double standard uncertainty and characterizes the interval value in which it is possible to expect the real value with a probability of 95%. This is stated according to the ISO/IEC Guide 98-3.

Total or partial reproduction of this document is not allowed without the permit from PharmaHemp d.o.o. The document does not substitute any other legal document.

Date issued:

05/01/2021

Approved by:

mag. Marko Dragan
Analytical Laboratory Manager

Authorized by:

dr. Boštjan Jančar
Chief Technology Officer

End of Certificate