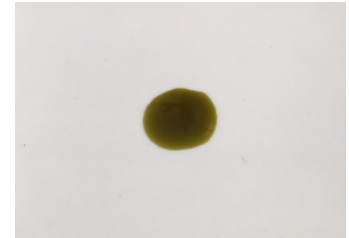


# CERTIFICATE OF ANALYSIS No.: 2020-2802

## CLIENT

Hempika d.o.o., Cankarjeva ulica 84  
5000 Nova Gorica, Slovenija



## SAMPLE

CBD Drops 5% - hemp oil

Sample condition: SUITABLE  
Sample ID: 205225  
Sample type: Viscous liquid  
Batch No.: DR05020357A

Work order: 2020-104527  
Analysis ID: 2020\_016  
Method ID: PHL\_RPC\_12C  
Method SOP: MET-002

Sample received: 22/12/2020  
Start of analysis: 22/12/2020  
End of analysis: 23/12/2020  
Analyst: Janez Gerdenc

CANNABINOID PROFILE	Concentration [% w/w]	Expanded uncertainty [% w/w]	Graphic presentation of relative cannabinoid concentration
<b>CBDV</b> - Cannabidivarin	0.665	0.080	
<b>CBDA</b> - Cannabidiolic acid	0.902	0.090	
<b>CBGA</b> - Cannabigerolic acid	< LOQ	n/a	
<b>CBG</b> - Cannabigerol	0.080	0.024	
<b>CBD</b> - Cannabidiol	4.10	0.21	
<b>THCV</b> - Tetrahydrocannabivarin	0.102	0.016	
<b>CBN</b> - Cannabinol	< LOQ	n/a	
<b>CBC</b> - Cannabichromene	< LOQ	n/a	
<b>THC</b> - Δ-9-Tetrahydrocannabinol	0.0344	0.0076	
<b>THCA</b> - Δ-9-Tetrahydrocannabinolic acid	< LOQ	n/a	
<b>8-THC</b> - Δ-8-Tetrahydrocannabinol *	< LOQ	n/a	
<b>CBL</b> - Cannabicyclol *	< LOQ	n/a	

The results marked by \* relate to non-accredited activity.

Units and abbreviations: % w/w = weight percent, < LOQ = below the limit of quantitation (0.03 % w/w), ND = not detected, n/a = not available.

The results given herein apply only to the sample as received. **Expanded Uncertainty** was calculated using coverage factor  $k = 2$ , corresponding to a double standard uncertainty and characterizes the interval value in which it is possible to expect the real value with a probability of 95%. This is stated according to the ISO/IEC Guide 98-3.

Total or partial reproduction of this document is not allowed without the permit from PharmaHemp d.o.o. The document does not substitute any other legal document.

Date issued:

24/12/2020

Approved by:

mag. Marko Dragan  
Analytical Laboratory Manager

Authorized by:

dr. Boštjan Jančar  
Chief Technology Officer

End of Certificate